



Public Document Pack

MEETING:	Penistone Area Council
DATE:	Thursday 7 September 2023
TIME:	10.00 am
VENUE:	Council Chamber, Penistone Town Hall

SUPPLEMENTARY AGENDA

- 2 Children and Family Services Update - Jane Flemming and Rachel Barraclough
(Pac.07.09.2023/2) (*Pages 3 - 18*)

To: Chair and Members of Penistone Area Council:-

Councillors Greenhough (Chair), Barnard, Burnett, Kitching, Lowe-Flello and Wilson

Area Council Support Officers:

Rachel Wilkinson, Penistone Area Council Senior Management Link Officer

Elaine Equeall, Penistone Area Council Manager

Rachel Payling, Head of Service, Stronger Communities

Peter Mirfin, Governance Manager

Cath Bedford, Public Health Principal - Communities

Please contact Lynne Belli on or email governance@barnsley.gov.uk

5 September 2023

This page is intentionally left blank

0-19 Public Health Nursing Service

Jane Fleming,

Healthy Child Programme Lead

Health Visitor Practice Teacher.



Universal Teams



- CENTRAL
- DEARNE
- NORTH
- NORTH EAST
- PENISTONE
- SOUTH



Barnsley – the place of possibilities.

0-19 Public Health Nursing Service

6 Area teams made up of:-

Healthy Child Programme Lead (HCPL)
Specialist Community Public Health Nurse's (SCPHN) Health Visitors & School Nurses
Public Health Nurses & Midwives (Adult & Children's trained)
Child development practitioners (Nursery Nurse qualified)
Public health support workers.
Student SCPHNs / Pre reg nursing students through partnership with Sheffield Hallam University.

Specialist Safeguarding Team (Partnership Plus Team, MASH, Gypsy, Traveller and Asylum Seeker SCPHN HV, Children in Care team)

Infant Feeding Service

System one development team (S1 Health Records)

0-19 Public Health Nursing Service Demographics

- **Children in Barnsley registered with 0-19 Public Health Nursing Service - 53,149 (Nov 2021)**
- **53,149 receive a Universal level of service - U**
- **1,408 receive a Universal Plus level of service - UP**
- **1078 receive a Universal Partnership Plus level of service- UP**
- **Schooling in / Living out 733**
- **Living in/ Schooling out 1360**



Penistone Locality

- **The local 0-19 Public Health Nursing Service Team**
- **X1 Team leader**
- **x3Health Visitors**
- **x1School Nurse (link to 11 schools across the area)**
- **X2 Public Health Nurses**
- **X3 Child Development Practitioners (link to every Early Years setting across the area)**
- **X1 Public Health Support Worker**

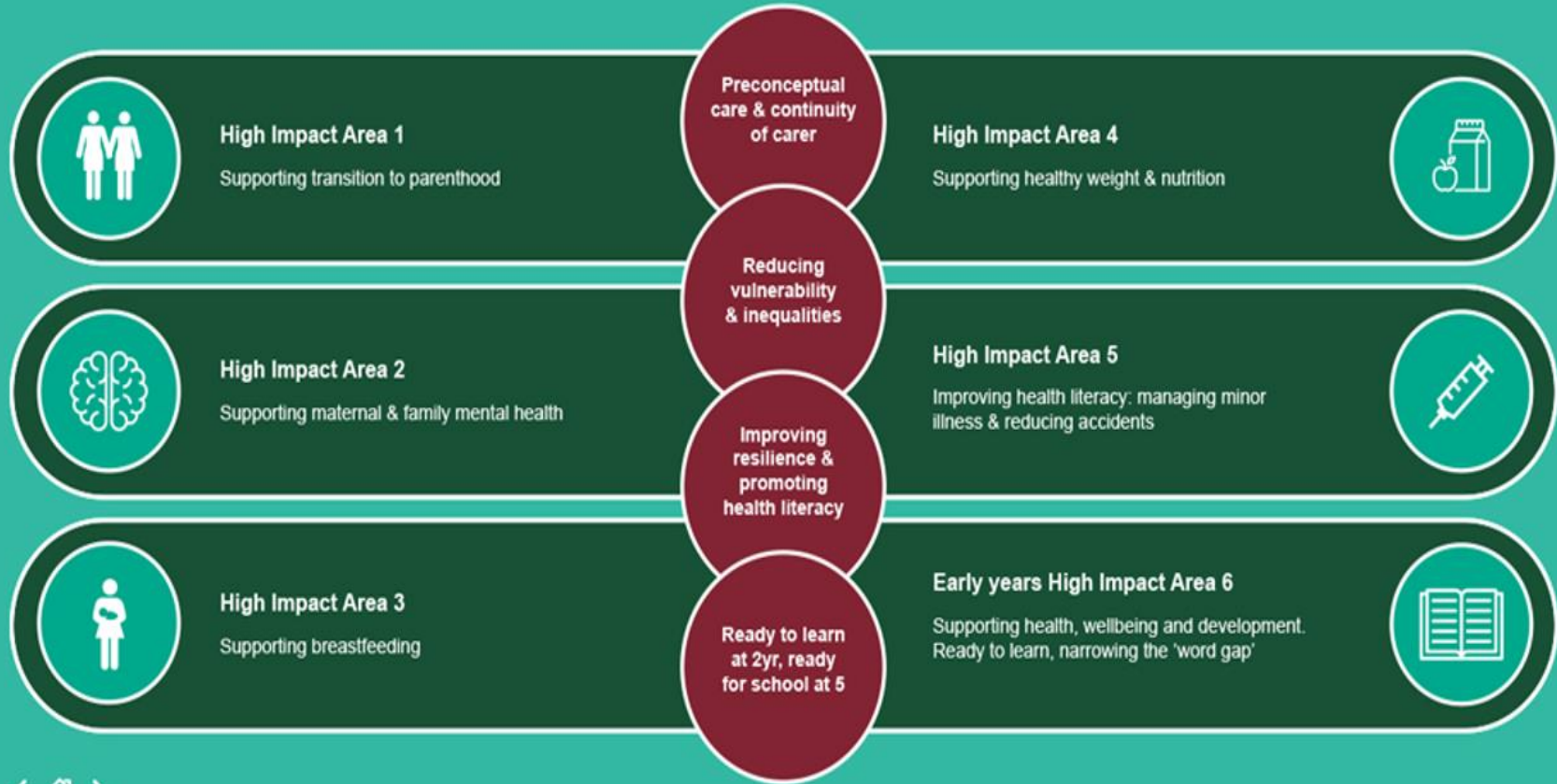
- **4,908 children receive a Universal level of service - U**
- **106 receive a Universal Plus level of service - UP**
- **Universal Partnership Plus level of service- UP (these transfer to our safeguarding or children in care team)**
- **Schooling in / Living out 187**
- **Living in/ Schooling out 186**



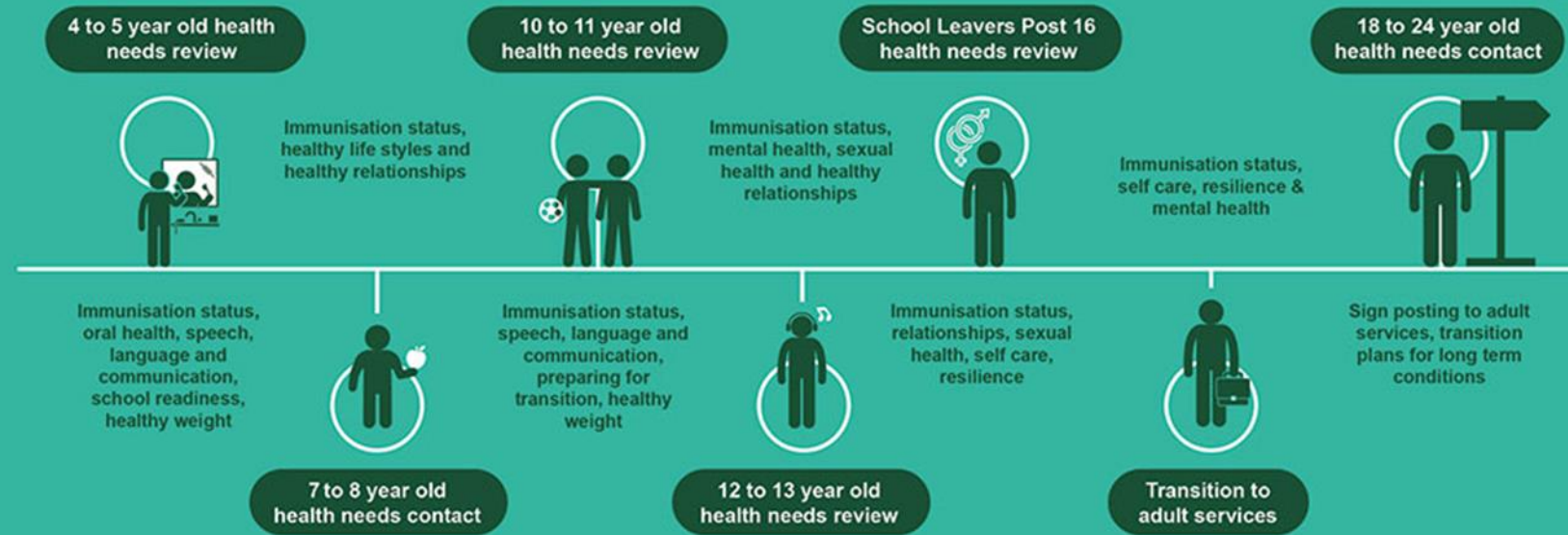
Health and wellbeing reviews and contacts for 0-5



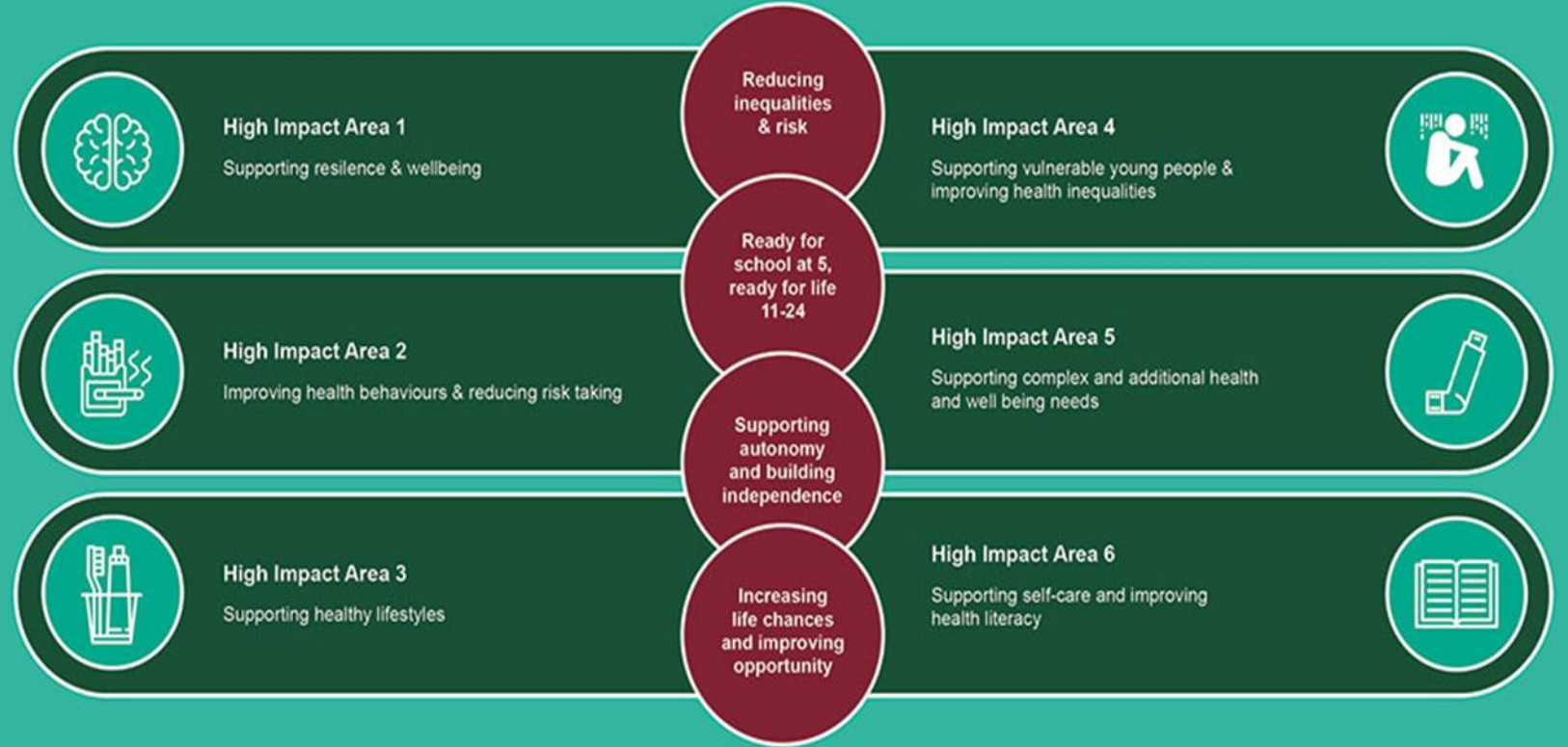
High Impact Areas for early years



Health and wellbeing reviews and contacts for 5-24



High Impact Areas for school age years



What is a Health Needs Assessment?

Family Dynamics/ support/ relationships.

Feeding/ Nutrition

Growth/Development

Physical/Mental Health

Immunisations

Specific / complex Health Needs

Attachment/ Attunement

Vulnerability factors eg Teenage parent, complex mental health, substance misuse, domestic violence.

Culture/Language

Risk Assessment eg past history, previous involvement with services

Sexual Health & risk taking behaviour

Home Environment

Education/ employment

Who do we work with?

- Schools/ EWO
- CAMHS
- Compass Be
- Chilypep
- GPs
- SYEDA
- Hospital services
- Sexual Health
- Social Care
- Midwives
- Family centres
- Public Health Partners within BMBC
- Targeted Youth Services
- Substance Misuse
- Youth Offending
- Police



Targeted Support

The Health Needs Assessment identifies any unmet health needs:

If a specific relevant role is identified for the 0-19 service we will remain involved to provide Targeted Support.

OR

We may signpost or refer to other relevant specialist services

Right person at the right time with the child central at all times

How to contact us

[Email- 0-19HealthTeam@barnsley.gov.uk](mailto:0-19HealthTeam@barnsley.gov.uk)

[-Single Point of Access\(SPA\) 01226 774411](tel:01226774411)



[- Barnsley0-19Public Health Nursing Service](#)



Microsoft Word
7 - 2003 Documer

Any Questions ???



Barnsley – the place
of possibilities.



BARNSLEY
Metropolitan Borough Council

This page is intentionally left blank